

PROPOSED DUAL OCCUPANCY 4 LEEMON STREET, CONDELL PARK NSW STORMWATER DRAINAGE CONCEPT PLAN DEVELOPMENT APPLICATION

AUTHORITY STORMWATER NOTES:

1. IT IS THE CONTRACTOR'S RESPONSIBILITY TO CHECK ALL SET OUT AND LEVEL PRIOR TO COMMENCEMENT OF WORKS AND TO REPORT ANY DISCREPANCIES FOUND TO THE SUPERINTENDENT.
2. ALL SET OUT DIMENSIONS ARE TO FACE OF KERB, CENTRELINE OF FENCE/BOLARD/PIPE.
3. SMOOTH ALL TRANSITION BETWEEN NEW AND EXISTING WORK IN BOTH LEVEL AND ALIGNMENT.
4. IT IS THE CONTRACTOR'S RESPONSIBILITY TO PROVIDE ALL SAFETY FENCES, WARNING SIGNS, TRAFFIC DIVERSIONS AND THE LIKE DURING CONSTRUCTION. ALL WORKS TO COMPLY WITH OCCUPATIONAL HEALTH AND SAFETY REQUIREMENTS AND OTHER RELEVANT AUTHORITY SAFETY REQUIREMENTS.
5. NO TREES SHALL BE REMOVED, CUTBACK OR RELOCATED WITHOUT THE WRITTEN INSTRUCTION FROM THE SUPERINTENDENT.
6. THE CONTRACTOR SHALL PROVIDE CERTIFICATION AND COMPACTIONS AND PAVEMENT THICKNESS FROM A NATA REGISTERED TESTING AUTHORITY MINIMUM THREE TESTS PER LAYER AS FOLLOWS

PIPE BACKFILL

DENSITY INDEX 75

SELECT FILL

95% STANDARD

SELECT FILL (LESS THAN 300mm

98% MODIFIED

FOLLOW BASE COURSE)

100% MODIFIED

BASE COURSE
7. THE AUSPEC SPECIFICATION SHALL BE THE SPECIFICATION FOR THESE WORKS.

DRAINAGE NOTES:

- ALL PIPES TO BE LAID ON 75mm SAND BED WITH THE BARRELS FULLY SUPPORTED.
- 100mm AND 150mm DIAMETER PIPES TO BE LAID ON MINIMUM 1% GRADE.
- MINIMUM DEPTH OF COVER FOR PIPES NOT SUBJECT TO VEHICULAR LOADING TO BE 300mm
- ALL DRAINAGE PIPES LAID UNDER PAVEMENT SHALL BE REINFORCED CONCRETE WITH RUBBER RING JOINTS.
- BACKFILL TRENCHES WITH COMPACTED SAND OR APPROVED AGGREGATE MATERIAL.
- ALL PITS TO HAVE 600 x 600mm INTERNAL DIMENSIONS (U.N.O).
- SILT ARRESTORS TO HAVE 900 x 900mm INTERNAL DIMENSIONS.
- HEAVY DUTY GRATES AND COVERS ARE TO BE PROVIDED IN TRAFFICABLE AREAS.
- PIT GRATE TO BE TYPE WELDLOK OR APPROVED EQUIVALENT.
- ALL PITS SHALL BE PROVIDED WITH A LOCKING LIP.
- ALL PITS SHALL BE MAINTAINED REGULARLY.
- TOP OF BENCHING SHALL BE TO THE HALF OF THE OUTLET PIPE DIAMETER.
- MAXIMUM FRONT ENTRY PIPE:-

STRAIGHT ENTRY - ϕ 750

SKEW ENTRY - ϕ 525
- ϕ 100 SUBSOIL DRAINAGE PIPE 3000mm LONG WRAPPED IN FABRIC SOCK TO BE PROVIDED ADJACENT TO INLET PIPES.
- COMPRESSIVE STRENGTH $f'c$ FOR CAST IN SITU CONCRETE TO BE A MINIMUM OF 32 MPa AT 28 DAYS.
- PROVIDE CLEANING EYES TO ALL DOWNPIPES NOT DIRECTLY CONNECTED TO PITS.
- ISOLATED JOINTS TO BE PROVIDED TO ISOLATE CONCRETE PAVEMENTS FROM PITS.
- ALL TRENCH GRATES PROVIDED SHALL HAVE MINIMUM CLEAR WIDTH OF 200mm.
- STORMWATER DRAINAGE CONNECTIONS TO THE MAIN SYSTEM SHALL BE TO THE REQUIREMENTS AND THE SATISFACTION OF LOCAL COUNCIL.



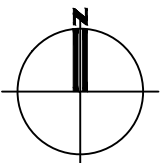
LOCALITY PLAN (COURTESY OF SIX MAPS)

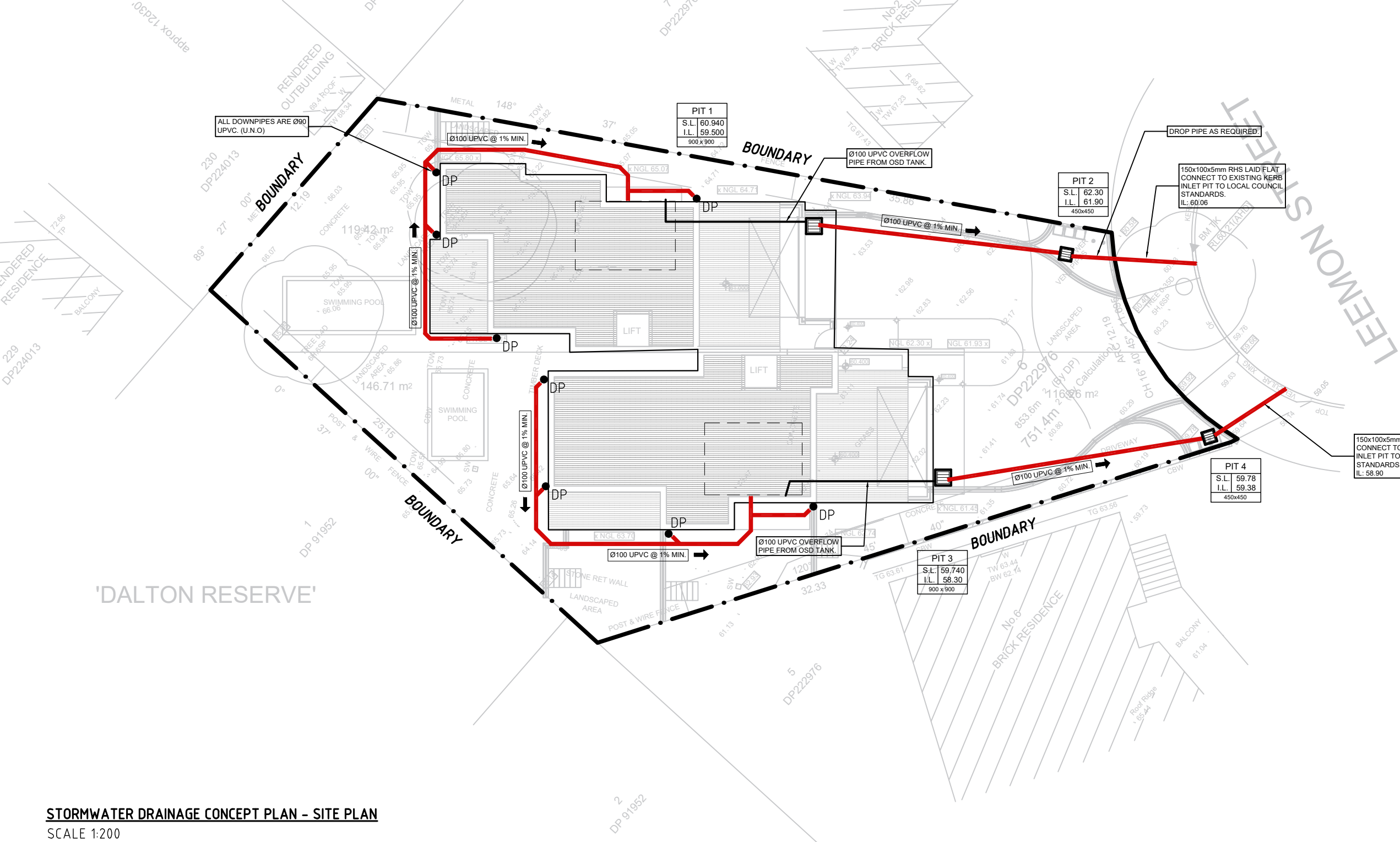
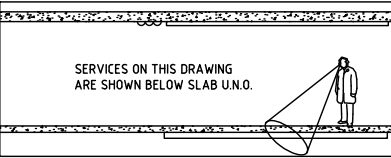
DRAWING REGISTER		
NO.	TITLE	REV.
SW.01	COVER SHEET	A
SW.02	STORMWATER DRAINAGE CONCEPT PLAN - SITE	A
SW.03	STORMWATER DRAINAGE CONCEPT PLAN - LOWER GROUND	A
SW.04	STORMWATER DETAILS SHEET 1	A
SW.05	STORMWATER DETAILS SHEET 2	A
SW.06	STORMWATER DETAILS SHEET 3	A

A	FOR DA APPROVAL	SL	28.01.25
ISSUE	DESCRIPTION	APPROVED	DATE

CLIENT
DENISE DARLOW

<div><div>KYSU</div><div>Structural & Civil Engineers</div></div>			
48 HIGH STREET, BANKSTOWN NSW 2200 tel: 0432 294 694 email: sluu@kysuengineers.com			
PROJECT			
4 LEEMON STREET CONDELL PARK NSW			
TITLE			
COVER SHEET			
SCALES as noted @ A3			DATE DEC.2023
DRAWN SL	DESIGN SL		APPROVED SL
REPRODUCTION OF THIS DRAWING IS PROHIBITED WITHOUT THE CONSENT OF KYSU ENGINEERS PTY. LTD.			
ISSUE A	PROJECT No. 2248	DRAWING No. SW.01	





STORMWATER DRAINAGE CONCEPT PLAN - SITE PLAN
SCALE 1:200

THE SITE IS LOCATED IN CANTERBURY BANKSTOWN COUNCIL.
SITE AREA = 751.4m²
ON-SITE DETENTION HAS BEEN DESIGNED TO RETAIN
POST-DEVELOPMENT TO PRE-DEVELOPMENT FLOWS USING
'DRAINS' MODELLING. ALL STORM DURATIONS HAD BEEN
CONSIDERED FROM 5 YEAR ARI TO 100 YEAR ARI.

NOTE:
SERVICES SHOWN ON PLAN ARE INDICATIVE, EXACT DEPTH AND
LOCATION TO BE CONFIRMED ONSITE. CONTRACTOR TO CARRY OUT
DIAL BEFORE YOU DIG APPLICATION AND ENGAGE A REGISTERED
SURVEYOR TO PEG OUT ALL EXISTING SERVICES PRIOR TO ANY WORK
COMMENCING ONSITE.

ALL EXISTING DRAINAGE IS TO BE INSPECTED BY A REGISTERED
PLUMBER AND CERTIFY THAT IT IS IN GOOD WORKING CONDITION.
OTHERWISE, ALLOW TO RECTIFY AND/OR REPLACE AS NECESSARY.

LEGEND

- S — S — AUTHORITY SEWER LINE
- X — X — X — X — AUTHORITY ELECTRICAL LINE
- T — T — T — T — TELSTRA LINE
- □ — □ — □ — □ — NBN LINE
- W — W — AUTHORITY WATER LINE
- G — G — AUTHORITY GAS LINE
- SSD --- SSD --- SUBSOIL DRAINAGE LINE
- SW — SW — STORMWATER LINE
- EX. SW — EXISTING STORMWATER LINE
- GRATED SURFACE INLET PIT
- PD PLANTER DRAIN
- DP DOWNPIPE
- RW0 RAINWATER OUTLET
- KERB INLET PIT

A	FOR DA APPROVAL	SL	28.01.25
ISSUE	DESCRIPTION	APPROVED	DATE

CLIENT

DENISE DARLOW

KYSU
Structural & Civil Engineers

48 HIGH STREET, BANKSTOWN NSW 2200
tel: 0432 294 694 email: sluu@kysuengineers.com

PROJECT

4 LEEMON STREET
CONDELL PARK NSW

TITLE

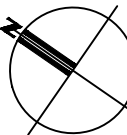
STORMWATER DRAINAGE
CONCEPT PLAN - SITE

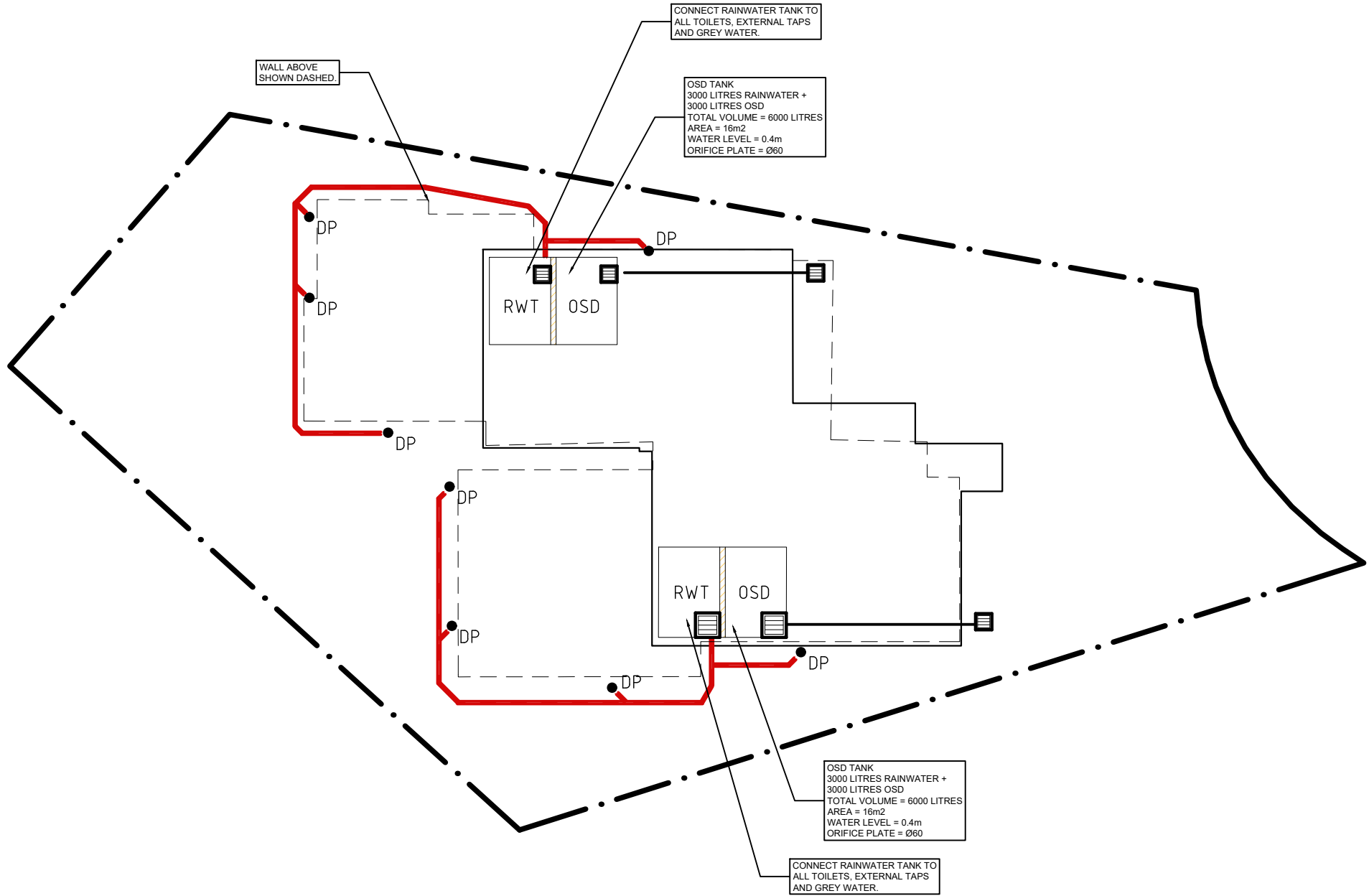
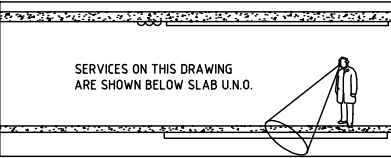
SCALES as noted @ A3 DATE DEC.2023

DRAWN SL DESIGN SL APPROVED SL

REPRODUCTION OF THIS DRAWING IS PROHIBITED
WITHOUT THE CONSENT OF KYSU ENGINEERS PTY. LTD.

ISSUE A PROJECT No. 2248 DRAWING No. SW.02





STORMWATER DRAINAGE CONCEPT PLAN - LOWER GROUND
SCALE 1:200

LEGEND

- AUTHORITY SEWER LINE
- AUTHORITY ELECTRICAL LINE
- TELSTRA LINE
- NBN LINE
- AUTHORITY WATER LINE
- AUTHORITY GAS LINE
- SUBSOIL DRAINAGE LINE
- STORMWATER LINE
- EXISTING STORMWATER LINE
- GRATED SURFACE INLET PIT
- PLANTER DRAIN
- DOWNPIPE
- RAINWATER OUTLET
- KERB INLET PIT

NOTE:
SERVICES SHOWN ON PLAN ARE INDICATIVE, EXACT DEPTH AND LOCATION TO BE CONFIRMED ONSITE. CONTRACTOR TO CARRY OUT DIAL BEFORE YOU DIG APPLICATION AND ENGAGE A REGISTERED SURVEYOR TO PEG OUT ALL EXISTING SERVICES PRIOR TO ANY WORK COMMENCING ONSITE.

ALL EXISTING DRAINAGE IS TO BE INSPECTED BY A REGISTERED PLUMBER AND CERTIFY THAT IT IS IN GOOD WORKING CONDITION. OTHERWISE, ALLOW TO RECTIFY AND/OR REPLACE AS NECESSARY.

A	FOR DA APPROVAL	SL	28.01.25
ISSUE	DESCRIPTION	APPROVED	DATE

CLIENT

DENISE DARLOW

KYSU

Structural & Civil Engineers

48 HIGH STREET, BANKSTOWN NSW 2200
tel: 0432 294 694 email: sluu@kysuengineers.com

PROJECT

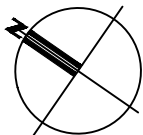
4 LEEMON STREET
CONDELL PARK NSW

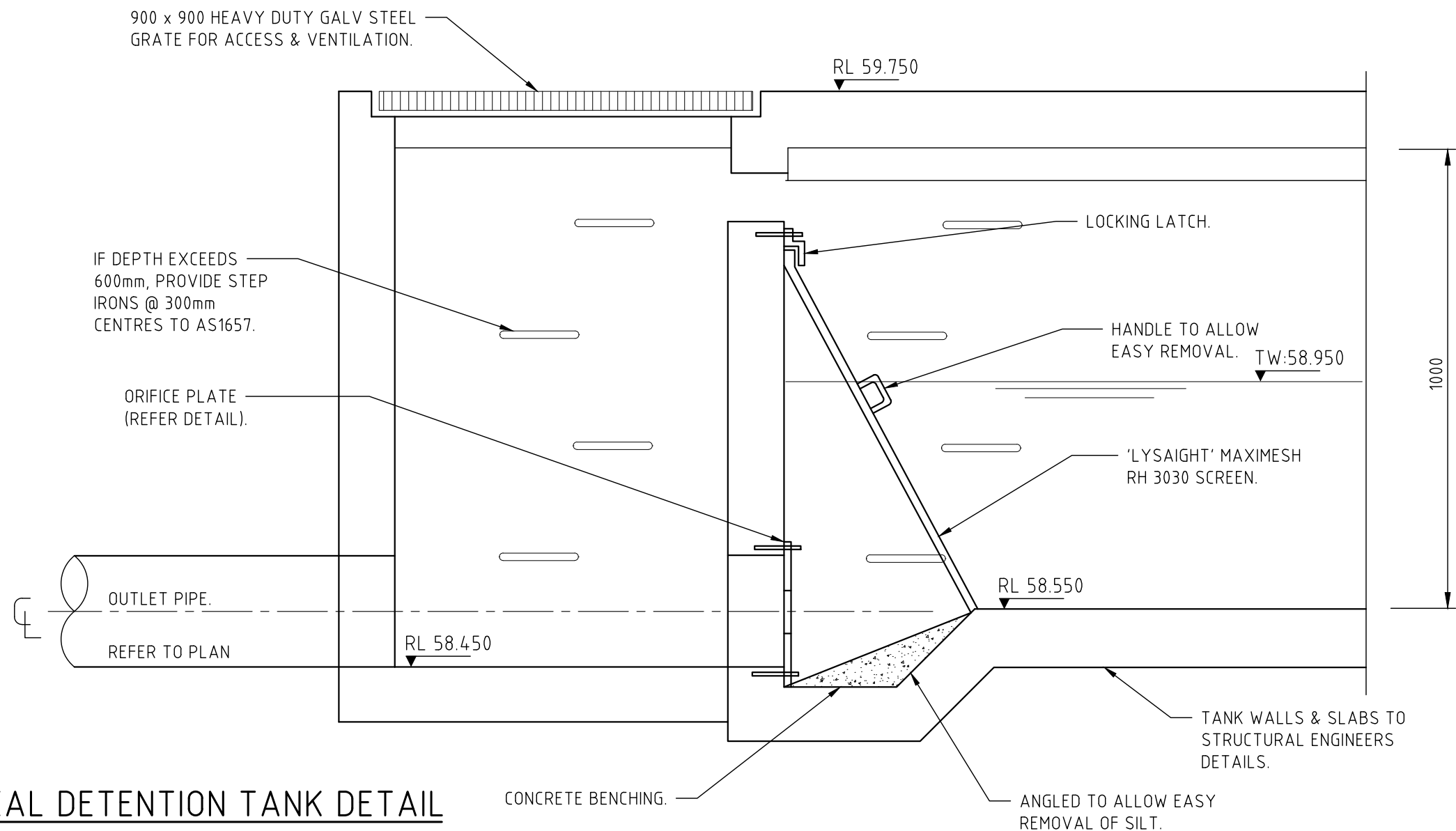
TITLE

STORMWATER DRAINAGE
CONCEPT PLAN
LOWER GROUND

SCALES	as noted @ A3	DATE	DEC.2023
DRAWN	SL	DESIGN	SL
ISSUE	A	PROJECT No.	2248
		DRAWING No.	SW.03

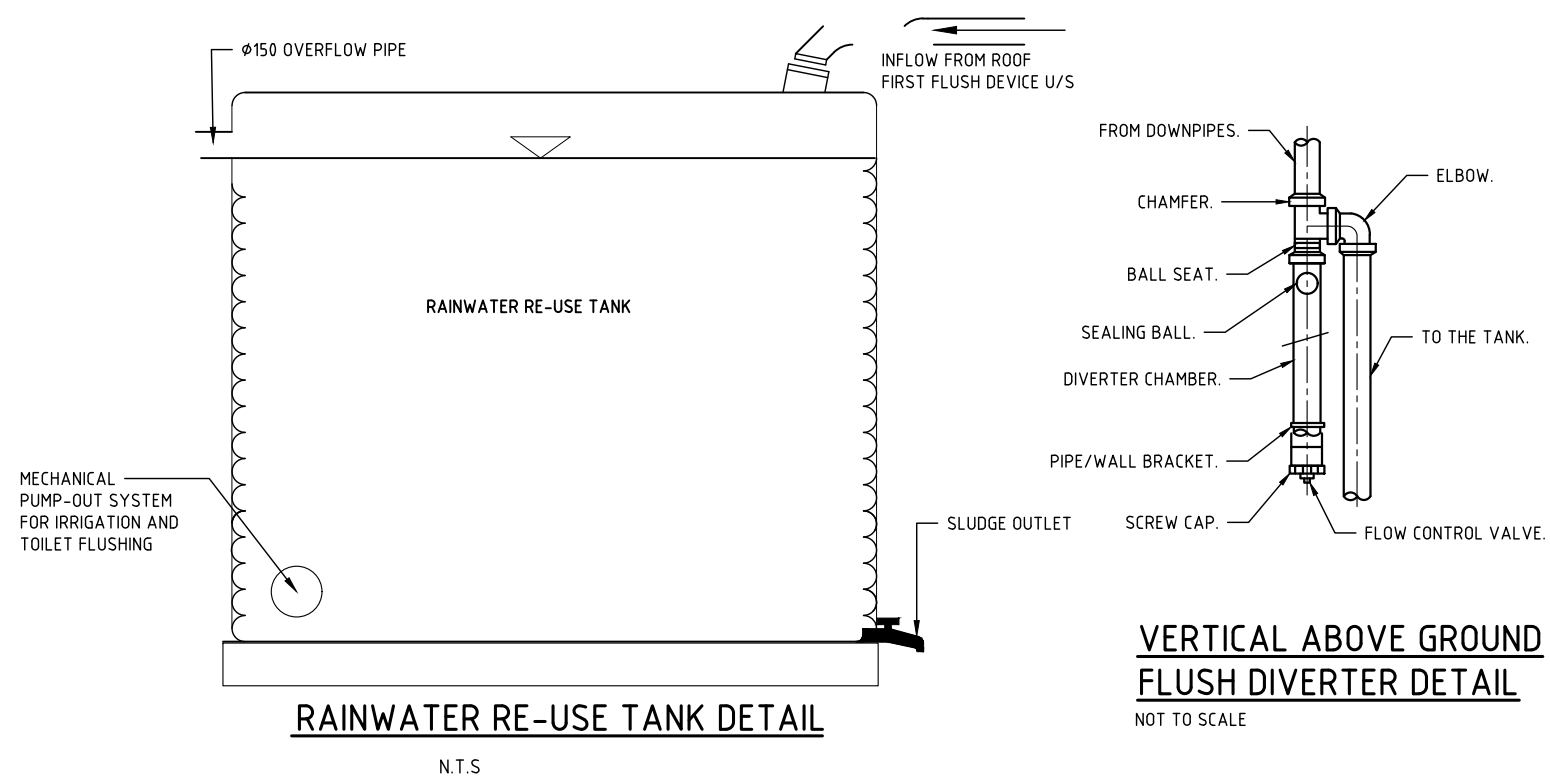
REPRODUCTION OF THIS DRAWING IS PROHIBITED WITHOUT THE CONSENT OF KYSU ENGINEERS PTY. LTD.





TYPICAL DETENTION TANK DETAIL

NOT TO SCALE

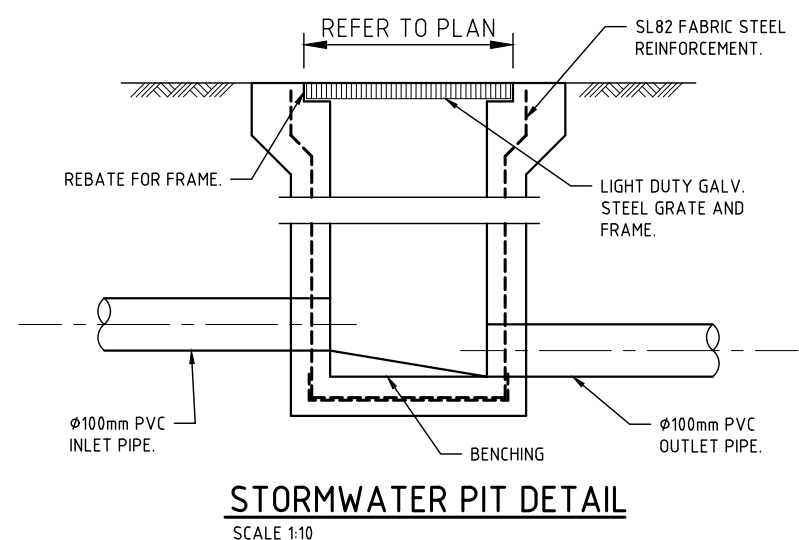


RAINWATER RE-USE TANK DETAIL

N.T.S

VERTICAL ABOVE GROUND FLUSH DIVERTER DETAIL

NOT TO SCALE



STORMWATER PIT DETAIL

SCALE 1:10

A	FOR DA APPROVAL	SL	28.01.25
ISSUE	DESCRIPTION	APPROVED	DATE

CLIENT

DENISE DARLOW

KYSU

Structural & Civil Engineers

48 HIGH STREET, BANKSTOWN NSW 2200
tel: 0432 294 694 email: sluu@kysuengineers.com

PROJECT

4 LEEMON STREET
CONDELL PARK NSW

TITLE

STORMWATER DETAILS
SHEET 1

SCALES as noted @ A3 DATE DEC.2023

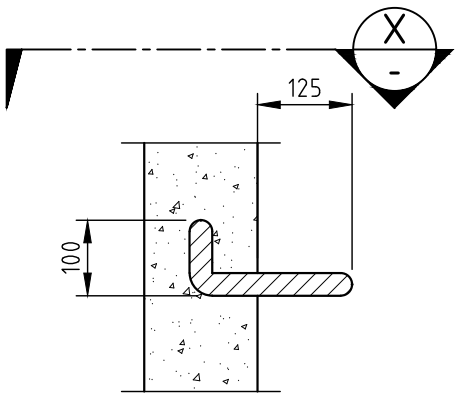
DRAWN SL DESIGN SL APPROVED SL

REPRODUCTION OF THIS DRAWING IS PROHIBITED
WITHOUT THE CONSENT OF KYSU ENGINEERS PTY. LTD.

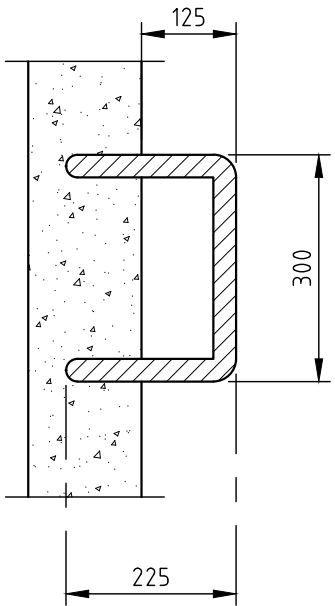
ISSUE A PROJECT No. 2248 DRAWING No. SW.04

POST-DEVELOPMENT OSD BASIN REQUIREMENTS.

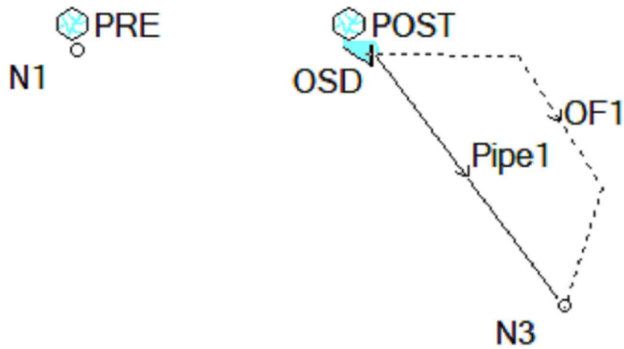
LOT AREA (m ²)	STORM (YR)	PRE-DEV. FLOW (m ³ /s)	POST-DEV. FLOW (m ³ /s)	PIPE OUTFLOW (m ³ /s)	WEIR OUTFLOW (m ³ /s)	TOTAL PSD (m ³ /s)	OSD VOLUME (m ³)
751.4	5	0.010	0.014	0.006	0.000	0.006	6m ³ OSD PER LOT
	10	0.012	0.017	0.007	0.000	0.007	
	20	0.014	0.019	0.008	0.000	0.008	
	50	0.016	0.022	0.008	0.004	0.012	
	100	0.018	0.025	0.008	0.009	0.017	



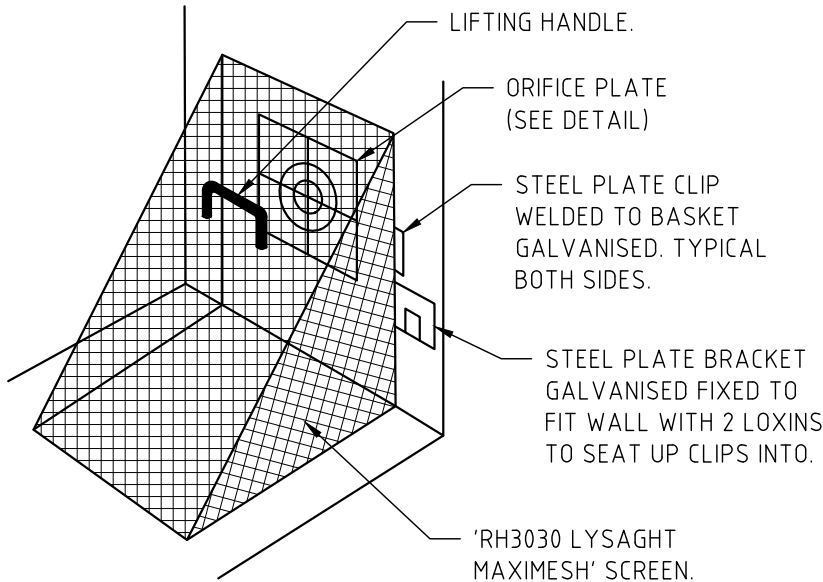
STEP IRONS DETAIL
SCALE 1:10



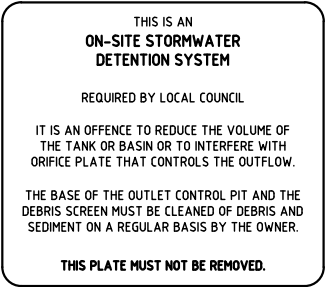
SECTION X
SCALE 1:10



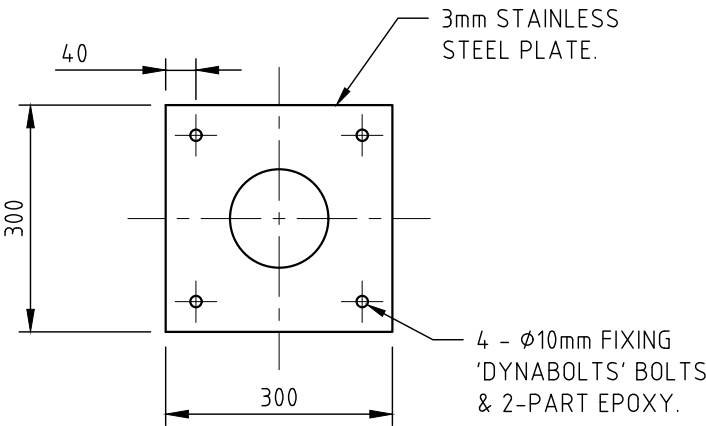
DRAINS MODEL



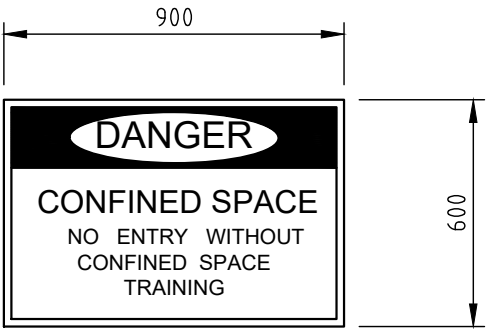
DEBRIS SCREEN DETAIL
NOT TO SCALE



OSD SIGN DETAIL
NOT TO SCALE



ORIFICE PLATE DETAIL
SCALE 1:10

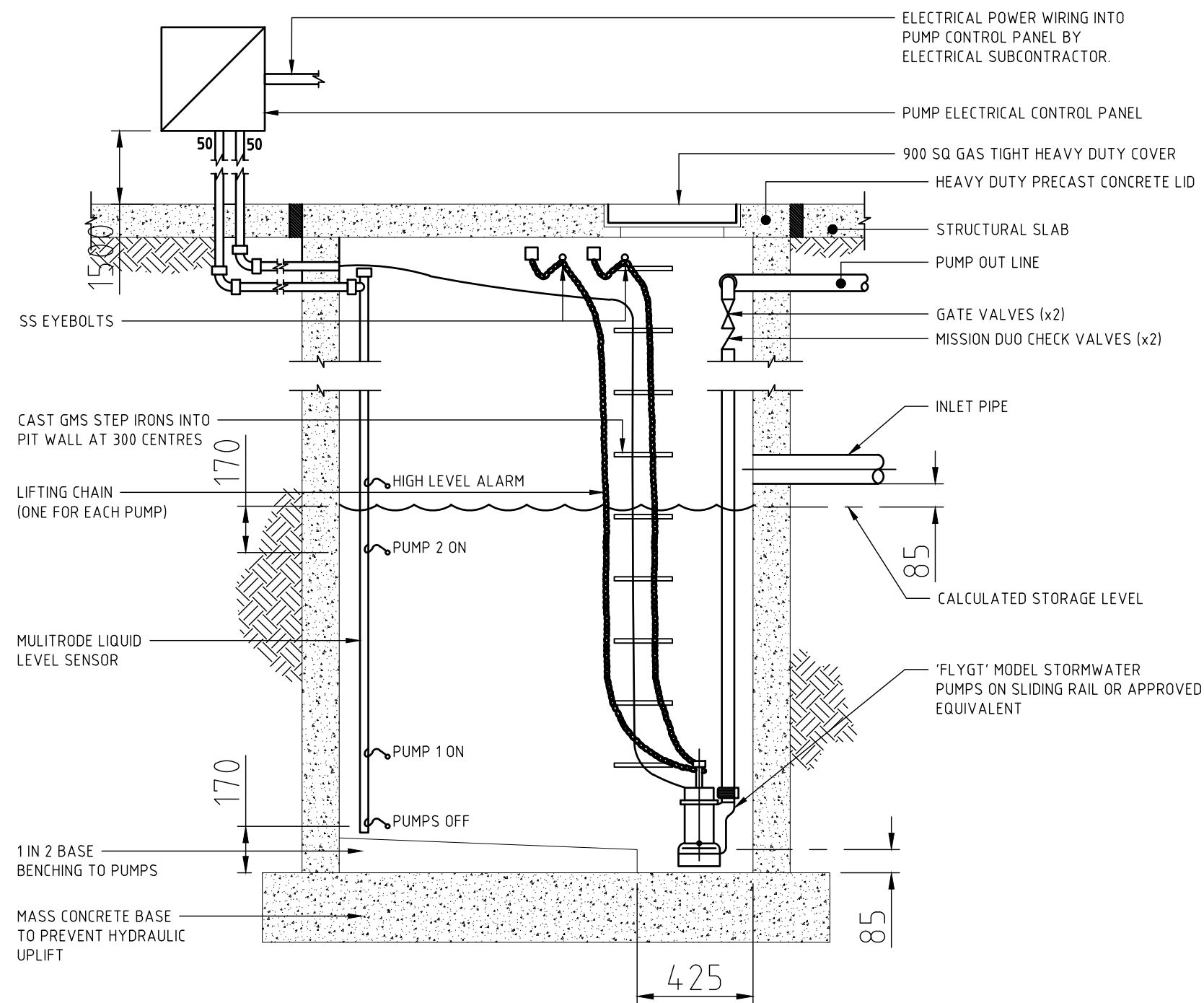


CONFINED SPACE SIGN DETAIL

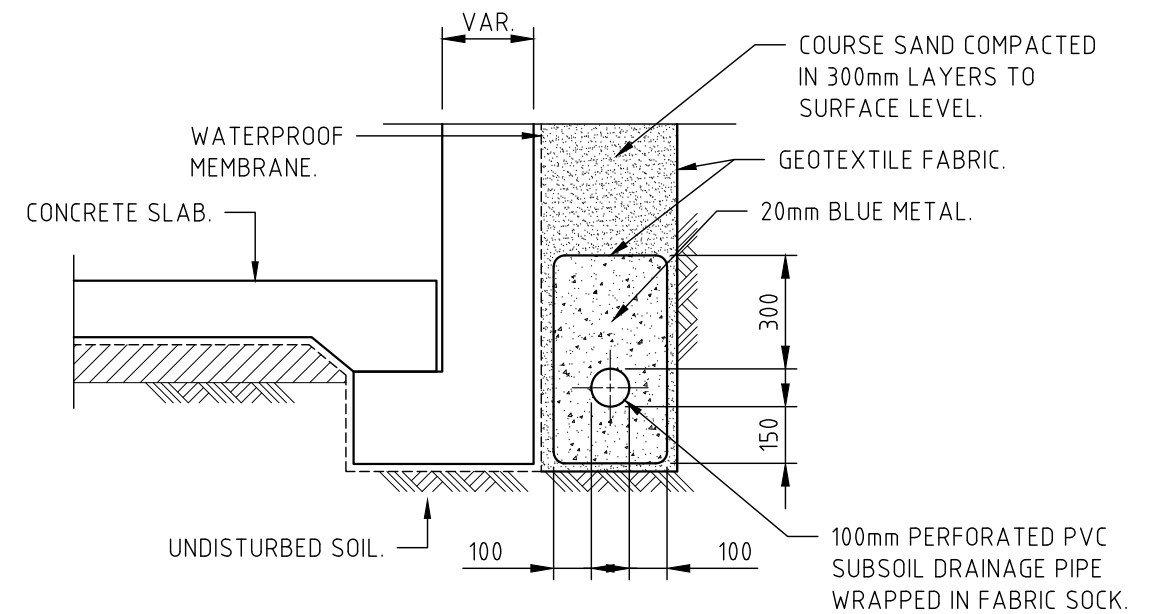
A	FOR DA APPROVAL	SL	15.12.23
ISSUE	DESCRIPTION	APPROVED	DATE

CLIENT
DENISE DARLOW

<div>KYSU</div> <div>Structural & Civil Engineers</div>			
48 HIGH STREET, BANKSTOWN NSW 2200 tel: 0432 294 694 email: sluu@kysuengineers.com			
PROJECT 4 LEEMON STREET CONDELL PARK NSW			
TITLE STORMWATER DETAILS SHEET 2			
SCALES as noted @ A3		DATE DEC.2023	
DRAWN SL	DESIGN SL		APPROVED SL
REPRODUCTION OF THIS DRAWING IS PROHIBITED WITHOUT THE CONSENT OF KYSU ENGINEERS PTY. LTD.			
ISSUE A	PROJECT No. 2248	DRAWING No. SW.05	



STORMWATER PUMP OUT PIT
NOT TO SCALE



TYPICAL SUBSOIL DRAINAGE DETAIL
SCALE 1:20

A	FOR DA APPROVAL	SL	15.12.23
ISSUE	DESCRIPTION	APPROVED	DATE

CLIENT
DENISE DARLOW

KYSU Structural & Civil Engineers			
48 HIGH STREET, BANKSTOWN NSW 2200 tel: 0432 294 694 email: sluu@kysuengineers.com			
PROJECT			
4 LEEMON STREET CONDELL PARK NSW			
TITLE			
STORMWATER DETAILS SHEET 3			
SCALES	as noted @ A3		DATE DEC.2023
DRAWN SL	DESIGN SL		APPROVED SL
REPRODUCTION OF THIS DRAWING IS PROHIBITED WITHOUT THE CONSENT OF KYSU ENGINEERS PTY. LTD.			
ISSUE A	PROJECT No. 2248	DRAWING No. SW.06	